

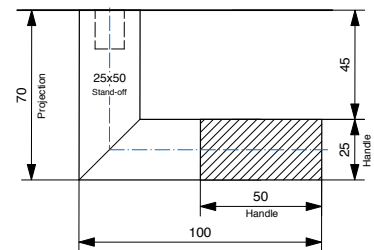
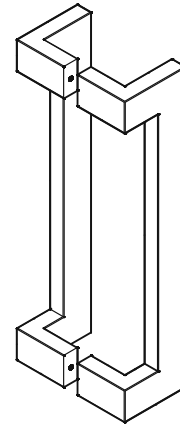


DDA Compliant - 316 Marine Grade Stainless Steel

CODE	SECTION	PROJECTION	LENGTH	CTC
BAH-170/A	50 x 25	70	350	300
BAH-170/B	50 x 25	70	500	450
BAH-170/C	50 x 25	70	650	600
BAH-170/D	50 x 25	70	950	900
BAH-170/E	50 x 25	70	1250	1200
BAH-170/F	50 x 25	70	1550	1500
BAH-170/G	50 x 25	70	1850	1800
BAH-170/H	50 x 25	70	2150	2100

• Special sizes available upon request

FINISHES	
Standard:	SSS/PSS
Options:	Powdercoat Dulux
Electroplate:	SBN ORB BN CO

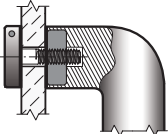


How to specify

	PRODUCT CODE	LENGTH	FINISH	FIXING	DOOR TYPE
Example:	BAH-170/A	350mm	SSS	B	GD

D = DISK FIX

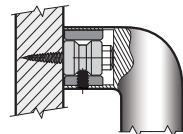
Disk fixed - **Single**



For Solid or Tube Handles

C = CONCEALED FIX

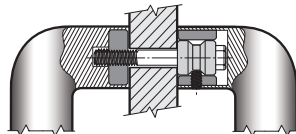
Coach Bolt fixed - **Single**



For Solid or Tube Handles

B = BACK to BACK FIX

Back to Back fixed - **Pair**



For Solid or Tube Handles

PLEASE SPECIFY THE DOOR TYPE

GD: Glass

TM: Timber

AL: Aluminium